



Victoria Government Gazette

No. S 65 Monday 9 February 2026
By Authority of Victorian Government Printer

Safety on Public Land Act 2004

DECLARATION OF PUBLIC SAFETY ZONES

I, Sam Quigley, Deputy Chief Fire Officer, Gippsland Region, Department of Energy, Environment and Climate Action, as delegate of the Secretary to the Department of Energy, Environment and Climate Action, make the following declaration of public safety zones under section 4(1) of the **Safety on Public Land Act 2004**.

1. Definitions

In this declaration:

- (a) 'the Act' means the **Safety on Public Land Act 2004**;
- (b) 'the declared public safety zones' means the area declared under clause 2 of this declaration;
- (c) 'the Schedule' means the Schedule to this declaration.

2. Declaration of Public Safety Zones

All areas of State forest shown shaded and hatched on the plan numbered LEGL./26-047 lodged in the Central Plan Office of the Department of Transport and Planning and attached in the Schedule is declared to be a public safety zone.

3. Purpose for which the area has been declared

The purpose for which the declared public safety zones have been declared is for the maintenance of public safety and for fire operations.

4. Period of the declaration

The period for which the declared public safety zones are declared is the period commencing from midnight on the day of publication of this notice in the Victoria Government Gazette and ending on 22 February 2026 inclusive.

5. Activities prohibited

The activities that are prohibited in the declared public safety zones are:

- (a) knowingly entering a declared public safety zone during a period when access is prohibited; and
- (b) knowingly remaining in or being present in a declared public safety zone during a period when access is prohibited.

6. Periods when access is prohibited

Access is prohibited to the declared public safety zone throughout the period of the declaration.

7. Exempt persons or classes of person

Pursuant to section 5(2) of the Act, the following persons or classes of person are exempt from the operation of this declaration:

- (a) Employees, agents and contractors of the Department of Energy, Environment and Climate Action engaged in carrying out their functions.
- (b) Employees, agents, volunteers and contractors of the Country Fire Authority engaged in carrying out their functions.
- (c) Employees, agents and contractors of Fire Rescue Victoria, Ambulance Victoria, WorkSafe Victoria and Environment Protection Authority Victoria engaged in carrying out their functions.
- (d) Members of the police force of Victoria engaged in carrying out their functions.

SPECIAL

- (e) Employees, agents and contractors of the Local Government Areas engaged in carrying out their functions.
- (f) Employees, agents and contractors of the Department of Health and Department of Families, Fairness and Housing engaged in carrying out their functions.
- (g) Employees, agents, volunteers and contractors of an Emergency Management Service engaged by the Department of Energy, Environment and Climate Action or the Country Fire Authority to carry out emergency management functions.
- (h) Employees, agents, volunteers and contractors of Networked Emergency Organisation partners engaged by the Department of Energy, Environment and Climate Action or the Country Fire Authority to carry out their functions.
- (i) Employees, agents and contractors of Water Authorities engaged in carrying out their functions.
- (j) Members of the public using State forest roads as the most practical access to and from private properties surrounding State forest.
- (k) Employees, agents and contractors engaged in accessing and carrying out functions within a prescribed mine, as defined by regulation 5.3.3 of the Occupational Health and Safety Regulations 2007, where both an approved work plan, as defined by section 40 of the **Mineral Resources (Sustainable Development) Act 1990**, and an Emergency plan, prepared in accordance with regulation 5.3.34 of the Occupational Health and Safety Regulations 2007, are in place which address the risk of bushfires.

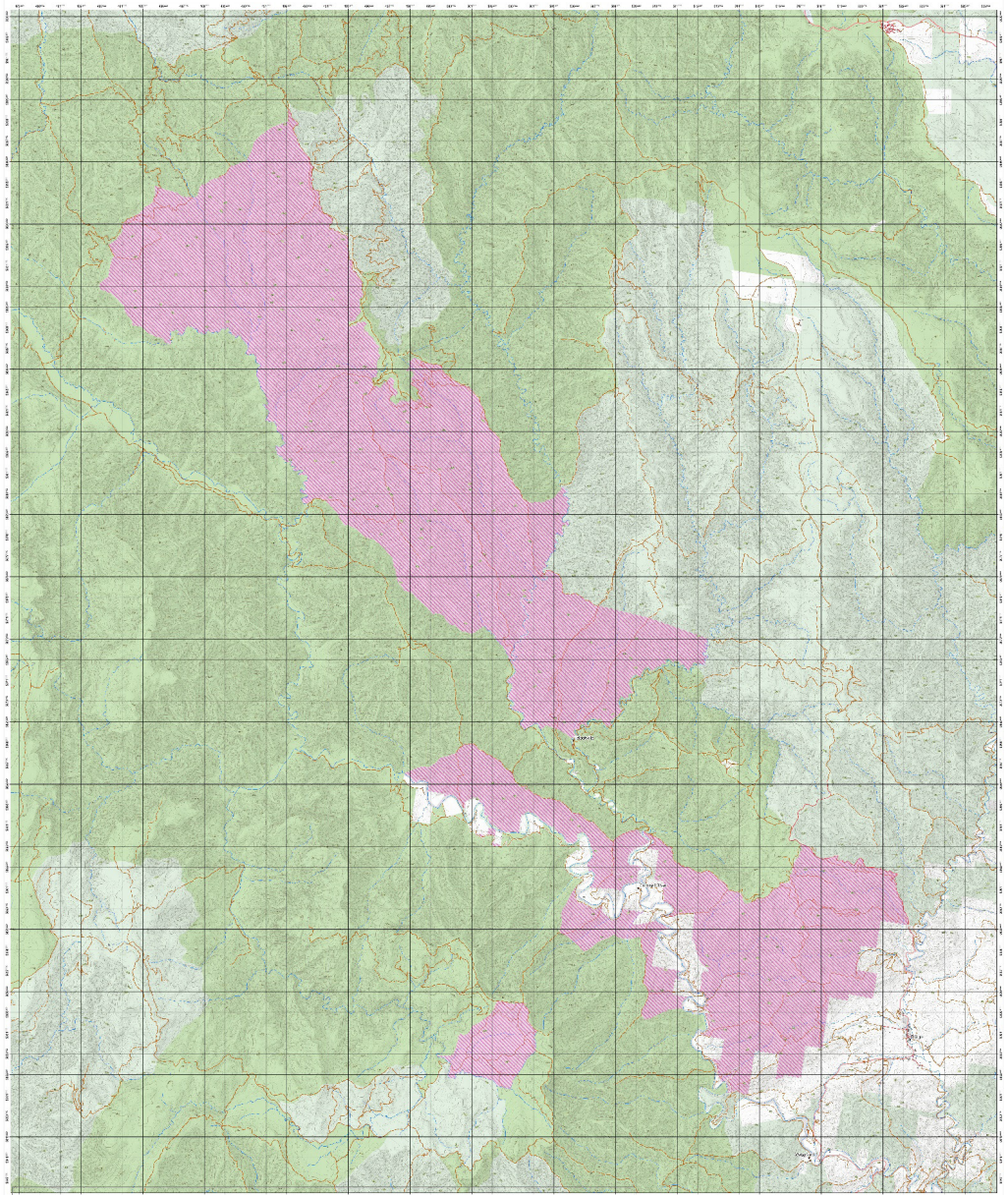
Dated: 9 February 2026

SAM QUIGLEY
Deputy Chief Fire Officer, Gippsland Region
Department of Energy, Environment and Climate Action
as delegate of the Secretary to the
Department of Energy, Environment and Climate Action

Notes:

1. A map showing the public safety zone is held at the Heyfield and Traralgon offices and at the Department's head office at 8 Nicholson Street, East Melbourne, Victoria 3002. The map is also available on the following web site: www.ffm.vic.gov.au/permits-and-regulations/closures-of-parks-and-forests
2. In addition to the above persons or classes of person exempted under section 5(2), section 9 of the **Safety on Public Land Act 2004** provides that a public safety zone declaration does not apply to the following:
 - the Secretary;
 - an authorised officer;
 - a utility engaged in the carrying out of its functions in a State forest;
 - a transport authority engaged in the carrying out of its functions in a State forest;
 - a person or class of person authorised under section 10 of the **Safety on Public Land Act 2004** to be in the public safety zone.

State Forest Closures - Public Safety Zone - Current at 9 February 2026



- Public Safety Zone as of 9 February 2026
- Parks and Reserves
- State Forest
- Other Public Land
- Waterways
- Highways
- Adverse Weather
- Local Road
- Local Road
- Roads 2WD
- Roads 4WD
- Proposed Roads

VicEmergency App



Parks Victoria Website



VicTraffic Website



PROJECTION: Transverse Mercator
HORIZONTAL DATUM: GDA2020
COORDINATE SYSTEM: GDA2020 MGA Zone 56
Print Date: 09/02/2026
Print Time: 11:23:08



1:60,000

Local Road Closures remain in place

© Crown in right of the State of Victoria, 2026. All rights reserved. This document is the property of the State of Victoria and is loaned to you. It and its contents are not to be distributed, copied, or otherwise used without the prior written permission of the State of Victoria. The State of Victoria is not responsible for any errors or omissions in this document. The State of Victoria is not responsible for any loss or damage, whether direct or indirect, arising from the use of this document.

Project name: C:\s65\MapDocs\105610\00001018_1018_MGA56_TrafficVicRoadsClosures_ForestClos_23_02_2026
PC Number: 6,582753



Scale: 1:60,000

ive

The *Victoria Government Gazette* is published by IVE Group Limited with the authority of the Government Printer for the State of Victoria

© State of Victoria 2026

This publication is copyright. No part may be reproduced by any process except in accordance with the provisions of the Copyright Act.

Address all enquiries to the Government Printer for the State of Victoria
Level 2, 1 Macarthur Street
Melbourne 3002
Victoria, Australia

How To Order



**Retail &
Mail Sales**

Victoria Government Gazette
Ground Floor, Building 8,
658 Church Street,
Richmond 3121



Telephone

03 8523 4601

email

gazette@ivegroup.com.au

Price Code A